



What is Simpl-Live?

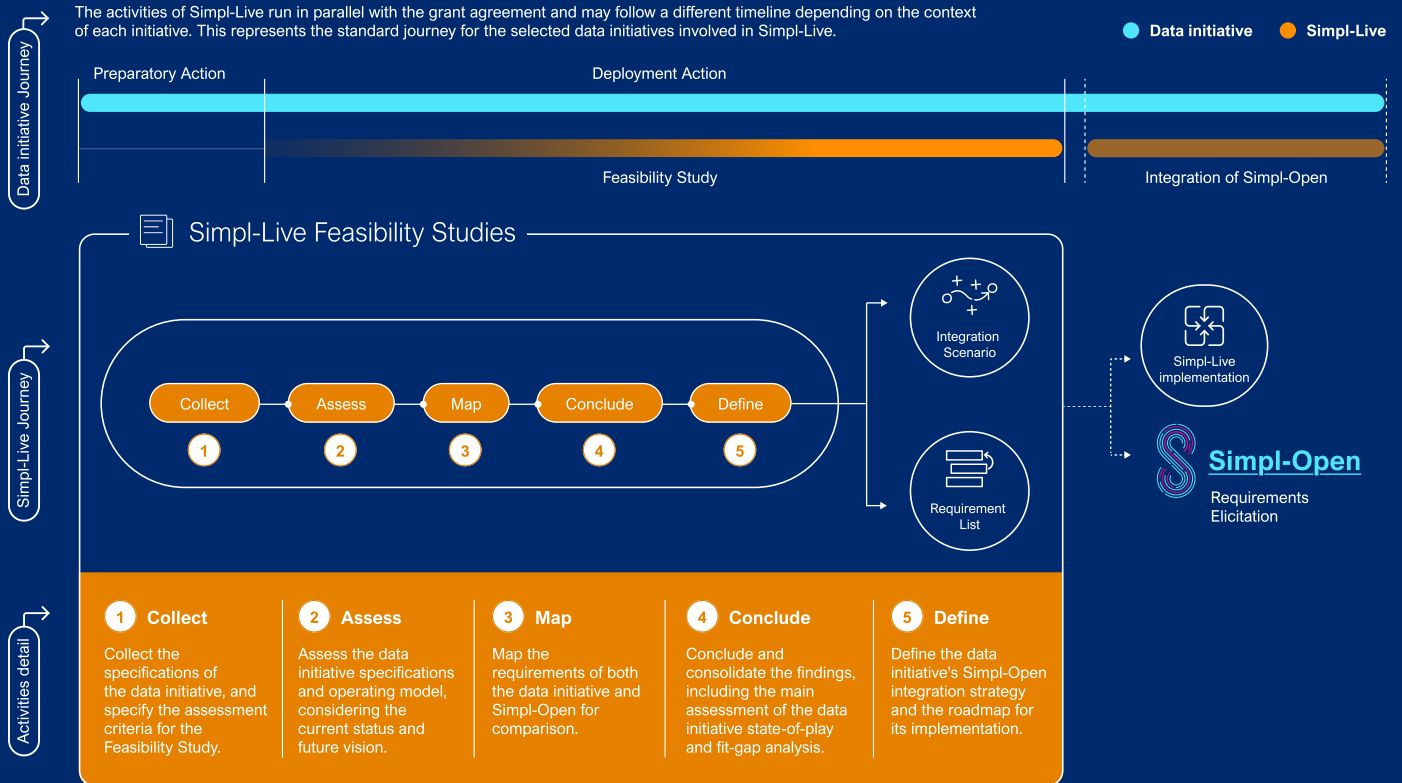
Simpl-Live is the journey of data initiatives towards [Simpl-Open](#) adoption.

Each data initiative follows the Simpl-Live journey throughout two key phases:

- 1 **Feasibility Study** to assess how to integrate Simpl-Open into the selected data initiative.
- 2 **Integration of Simpl-Open** into the data initiative following what was defined in the Feasibility Study.



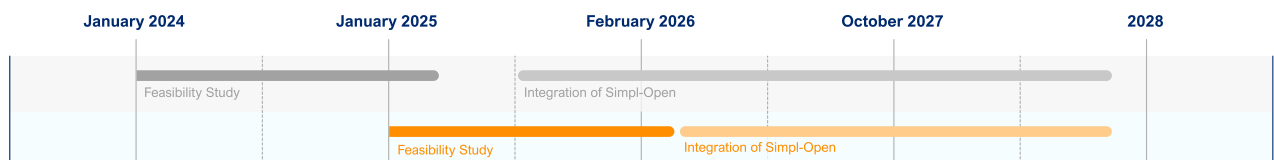
How is Simpl-Live collaborating with common European data initiatives?



What are the benefits of Simpl-Live?

- Provide guidance on **how to integrate Simpl-Open** to meet the specific requirements of a data initiative.
- Identify **key steps** for integrating Simpl-Open and **develop a roadmap** for its implementation within the data initiative, designing a tailored integration scenario.
- Support the **customised integration** of Simpl-Open components within the data initiative architecture.
- Consider the **data initiative requirements** for future Simpl-Open developments and improvements

Simpl-Live is currently working with **four common European data initiatives*** on their integration feasibility study. The integration phase with the first **six data initiatives**** will start soon.



(*)
 GDDS – Green Deal Data Space
 EMDS – European mobility data space
 CEEDS – Common European Energy Data Space
 CEADS – Common European Agricultural Data Space

(**)
 LDS – Language Data Space
 PPDS – Public Procurement Data Space
 EHDS2 – European Health Data Space for the secondary use of health data

DestinE – Destination Earth
 EOCS – European Open Science Cloud
 SCDS – Smart Communities Data Space